

Maastricht Region. Bright site of life

Maastricht Region (Zuid-Limburg), the most southern part of the Dutch province Limburg. Just a 6 kilometre stretch of Maastricht Region backs onto the rest of the Netherlands while the remaining 220 kilometres of its borders are shared with other countries: the Belgian regions of Flanders and Wallonia and the German federal state of North Rhine-Westphalia. The area extending about 40 kilometres from Maastricht Region is known as the Meuse-Rhine Euregion, with a combined population of 4 million people.

Maastricht Region lies precisely on the border between the Latin and Germanic languages and cultures of Europe. In our Euregion, the main languages spoken are French, German, and Dutch, alongside a great many dialects and of course English. This 'rubbing of cultures' has made the region what it is today: an open, multi-lingual, and innovative society, full of vitality. The 30.000 students, a third of whom come from outside the Netherlands; the nearby cities of Brussels, Cologne and Düsseldorf, and their international airports, all within an hour's journey; the United World College; and the multi-lingual population: all these factors make Maastricht Region the most European region of the Netherlands and the most international region of Europe.

What a place to live in!

Four sub-regions

The Maastricht Region has 4 sub-regions, each with its own distinctive character: the urban agglomerations of Parkstad, Sittard-Geleen and Maastricht, and the rural rolling hills in between. Together they offer a complete range within a compact region measuring a little over 25 x 25 kilometres. One interlinked urban area with a beautiful landscape park in the centre.

Parkstad, with Heerlen at its centre, offers a high-quality living environment with plenty of green and open spaces.

A characteristic urbane culture is developing, with an emphasis on young people and pop music. Sittard-Geleen forms the industrial heart of the region, with the Chemelot Campus at the centre. In the field of materials and chemicals, hundreds of new companies are emerging and developing here, putting their inventions directly into production. Maastricht is an international university city, a centuries-old city with countless churches, a Roman heart and a broad spectrum of shops, culture and gastronomy. The hills found in southern Limburg are the Heuvelland and form a stark contrast with the above-mentioned three densely built-up urban agglomerations. It is an area of peace and quiet, open spaces and nature, with sleepy villages dotted around and beside rivers that have carved out deep valleys.

Economy

One distinctive part of Maastricht Region's history is its mining past. Following the closure of the mines in 1965, the core activities of the region switched from coal and petrochemicals to service provision, knowledge, high-quality materials and life sciences. One of the driving forces in that transformation process is Brainport2020: the economic development programme for the southeastern part of the Netherlands. This part of the country already occupies 13th place among the world's top technological regions. The objective of the Brainport2020 programme is to reach the top 10 within 10 years.

Chemistry & Materials and Life Sciences form the national spearheads of the programme. The most important developments take place on the two Limburg campuses: the Chemelot Campus and the Maastricht Health Campus.

International Region

Due to the unique location in the heart of Europe, the region enjoys excellent transport connections. Maastricht Aachen Airport (MAA) and the airports of Liège, Charleroi, Eindhoven, Cologne and Weeze (Niederrhein) offer flights to primarily European destinations. For intercontinental flights, Brussels and Düsseldorf airports are within easy reach. They all lie within an hour's journey of the Maastricht Region. The cities of Liège and Aachen are just a stone's throw away. These cities offer high-speed rail connections taking passengers to Brussels within an hour, to Frankfurt in less than 2 hours, to Paris in 2.5 hours and to London in 4 hours. The region's own railway stations offer direct trains to Eindhoven (an hour away), Utrecht and Amsterdam (around two hours away), departing every half hour.

At this crossroads within Europe, Maastricht Region has been offering hospitality to new residents, visitors and companies for around 2000 years. The Maastricht Region offers you a warm welcome!

Maastricht

This Infographic is developed by the City of Maastricht in cooperation with the Regiobranding foundation.

This infographic forms part of the economic view of Maastricht 2020: "Made in Maastricht". The city of Maastricht focuses on retaining a broad economic structure, where entrepreneurs are well supported and there is customized service. Besides input on social (good education) and physical (good roads) parameters, the city has chosen three main focal areas: knowledge and innovation; the strengthening of the relationship between culture and economy; and Maastricht as a meeting point for shopping, leisure and the new ways of working.

More information at: bit.ly/TkqUSK



ZUID-LIMBURG

MAASTRICHT REGION



DESIGN

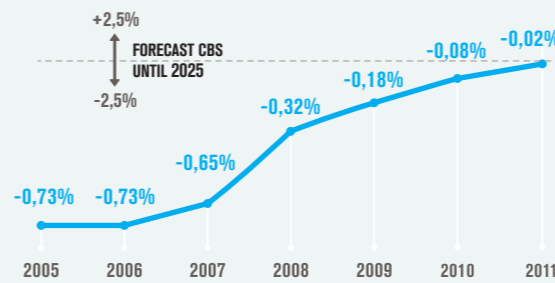
Studio Brandstof i.o.v. Regiobranding Zuid-Limburg

www.studiobrandstof.nl
www.zuidlimburg.nl

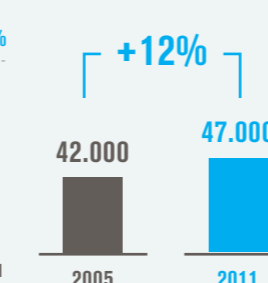
SOURCES

Etil, Kennis en Economisch Onderzoek (Rabobank), CBS, Atlas voor Gemeenten, NICIS, Brainport2020, UWV.

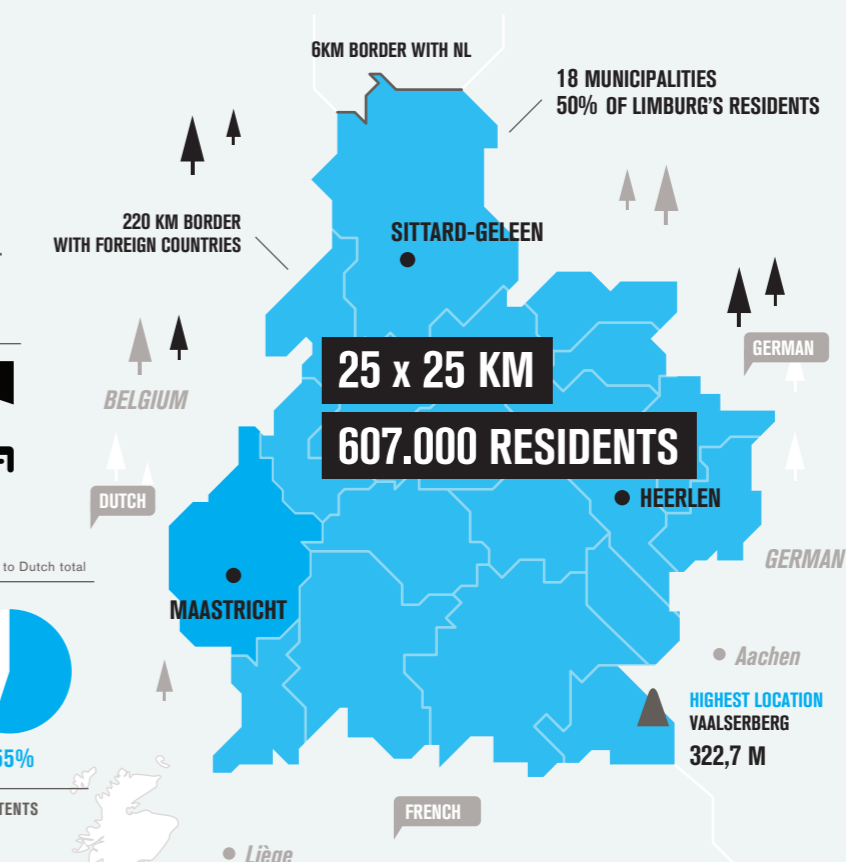
DEVELOPMENT OF POPULATION



AGE GROUP 20-25



RESIDENTS AND REGION



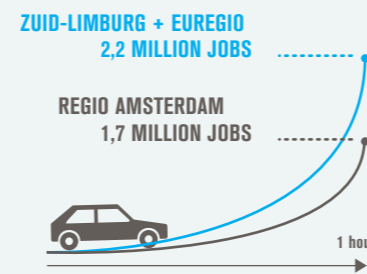
7 MICHELIN STARS



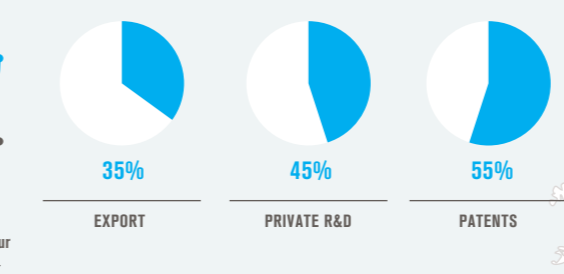
CULTURE



JOBS WITHIN 1 HOUR COMMUTE



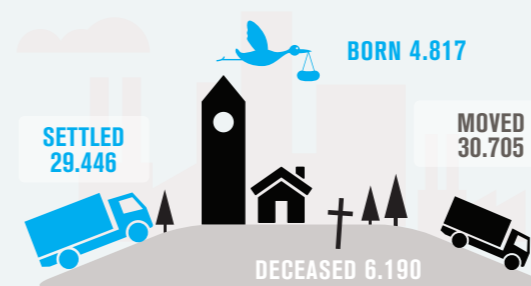
BRAINPORT SOUTHEASTERN NETHERLANDS * contribution to Dutch total



GROSS REGIONAL PRODUCT



DEVELOPMENT OF POPULATION 2011



TRAIN JOURNEY TIMES



DEVELOPMENT OF UNEMPLOYMENT

